

Satztechnische Modelle in Bach-Chorälen "Fächer"

a)

Du, o schönes Weltgebäude (Nr. 87)

Handwritten musical notation for the chorale 'Du, o schönes Weltgebäude (Nr. 87)'. It features a grand staff with treble and bass clefs. The melody is in the right hand, and the accompaniment is in the left hand. The key signature has one flat (B-flat), and the time signature is common time (C). The piece ends with a fermata.

c-Moll:

Heut ist, o Mensch (Nr. 168)

Handwritten musical notation for the chorale 'Heut ist, o Mensch (Nr. 168)'. It features a grand staff with treble and bass clefs. The melody is in the right hand, and the accompaniment is in the left hand. The key signature has one flat (B-flat), and the time signature is common time (C). The piece ends with a fermata.

Von Gott will ich nicht lassen (Nr. 191)

Handwritten musical notation for the chorale 'Von Gott will ich nicht lassen (Nr. 191)'. It features a grand staff with treble and bass clefs. The melody is in the right hand, and the accompaniment is in the left hand. The key signature has one flat (B-flat), and the time signature is common time (C). The piece ends with a fermata.

Modell

Handwritten musical notation for the 'Modell' section. It features a grand staff with treble and bass clefs. The melody is in the right hand, and the accompaniment is in the left hand. The key signature has one flat (B-flat), and the time signature is common time (C). The piece ends with a fermata. Below the bass staff, the numbers '6 (6)' are written.

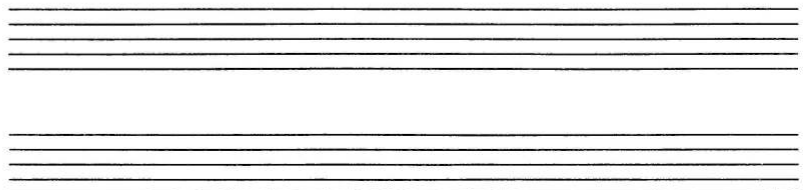
b)

Uns ist ein Kindlein (Nr. 148)

Handwritten musical notation for the chorale 'Uns ist ein Kindlein (Nr. 148)'. It features a grand staff with treble and bass clefs. The melody is in the right hand, and the accompaniment is in the left hand. The key signature has two sharps (F# and C#), and the time signature is common time (C). The piece ends with a fermata.

Ach Gott, wie manches Herzeleid (Nr. 156)

Handwritten musical notation for the chorale 'Ach Gott, wie manches Herzeleid (Nr. 156)'. It features a grand staff with treble and bass clefs. The melody is in the right hand, and the accompaniment is in the left hand. The key signature has two sharps (F# and C#), and the time signature is common time (C). The piece ends with a fermata.



c)

Helft mir Gott's Güte preisen (Nr. 88)

Handwritten musical score for 'Helft mir Gott's Güte preisen (Nr. 88)'. It consists of two staves: a treble clef staff and a bass clef staff. The key signature has one sharp (F#). The melody in the treble staff is primarily composed of quarter and eighth notes, with some rests. The bass staff provides a harmonic accompaniment with chords and moving lines.

andere Fassung (Nr. 123)

Handwritten musical score for 'andere Fassung (Nr. 123)'. It consists of two staves: a treble clef staff and a bass clef staff. The key signature has one sharp (F#). The melody in the treble staff is similar to the first version but with some rhythmic and melodic variations. The bass staff provides a harmonic accompaniment.

Jesu, der du selbstest wohl (Nr. 169)

Handwritten musical score for 'Jesu, der du selbstest wohl (Nr. 169)'. It consists of two staves: a treble clef staff and a bass clef staff. The key signature has two sharps (F#, C#). The melody in the treble staff is primarily composed of quarter and eighth notes. The bass staff provides a harmonic accompaniment.

Two empty musical staves, one treble clef and one bass clef, with a key signature of two sharps (F#, C#). This appears to be a placeholder for a second version of the score for 'Jesu, der du selbstest wohl (Nr. 169)'. The staves are otherwise blank.

d)

Ach Gott vom Himmel (Nr. 3)

Handwritten musical score for 'Ach Gott vom Himmel (Nr. 3)'. It consists of two staves: a treble clef staff and a bass clef staff. The key signature has one sharp (F#). The melody in the treble staff is primarily composed of quarter and eighth notes. The bass staff provides a harmonic accompaniment.

Herzliebster Jesu (Nr. 105)

Handwritten musical score for 'Herzliebster Jesu (Nr. 105)'. It consists of two staves: a treble clef staff and a bass clef staff. The key signature has one sharp (F#). The melody in the treble staff is primarily composed of quarter and eighth notes. The bass staff provides a harmonic accompaniment.

Laß, o Herr (Nr. 218)

Handwritten musical score for 'Laß, o Herr (Nr. 218)'. It consists of two staves: a treble clef staff and a bass clef staff. The key signature has two flats (Bb, Eb). The melody in the treble staff is primarily composed of quarter and eighth notes. The bass staff provides a harmonic accompaniment.

diatonisches Modell

Two empty musical staves, one treble clef and one bass clef. This appears to be a placeholder for a diatonic model for the piece 'Laß, o Herr (Nr. 218)'. The staves are otherwise blank.

Satztechnische Modelle in Bach-Chorälen

Parallel-Bewegungen

a) Dezimengänge (bis zu drei Akkorden häufig)

Das neugeborne Kindelein (Nr. 178)

Handwritten musical score for 'Das neugeborne Kindelein (Nr. 178)'. The score is in G minor (one flat) and 3/4 time. It shows a parallel motion in both hands, with the right hand playing a series of chords and the left hand playing a corresponding line of notes. The key signature is one flat (B-flat), and the time signature is 3/4. The piece ends with a fermata over the final note.

Wachet auf (Nr. 179)

Handwritten musical score for 'Wachet auf (Nr. 179)'. The score is in G minor (one flat) and 3/4 time. It shows a parallel motion in both hands, with the right hand playing a series of chords and the left hand playing a corresponding line of notes. The key signature is one flat (B-flat), and the time signature is 3/4. The piece ends with a fermata over the final note.

Es ist genug (Nr. 216)

Handwritten musical score for 'Es ist genug (Nr. 216)'. The score is in D major (two sharps) and common time (C). It shows a parallel motion in both hands, with the right hand playing a series of chords and the left hand playing a corresponding line of notes. The key signature is two sharps (D major), and the time signature is common time (C). The piece ends with a fermata over the final note.

Nun preiset alle (Nr. 222)

Handwritten musical score for 'Nun preiset alle (Nr. 222)'. The score is in D major (two sharps) and common time (C). It shows a parallel motion in both hands, with the right hand playing a series of chords and the left hand playing a corresponding line of notes. The key signature is two sharps (D major), and the time signature is common time (C). The piece ends with a fermata over the final note.

b) Fauxbourdon (über zwei Akkorde selten)

Gott hat das Evangelium (Nr. 181)

Handwritten musical score for 'Gott hat das Evangelium (Nr. 181)'. The score is in D major (two sharps) and common time (C). It shows a fauxbourdon in both hands, with the right hand playing a series of chords and the left hand playing a corresponding line of notes. The key signature is two sharps (D major), and the time signature is common time (C). The piece ends with a fermata over the final note.

Christ, der du bist der helle Tag (Nr. 230)

Handwritten musical score for 'Christ, der du bist der helle Tag (Nr. 230)'. The score is in G minor (one flat) and common time (C). It shows a fauxbourdon in both hands, with the right hand playing a series of chords and the left hand playing a corresponding line of notes. The key signature is one flat (B-flat), and the time signature is common time (C). The piece ends with a fermata over the final note.